

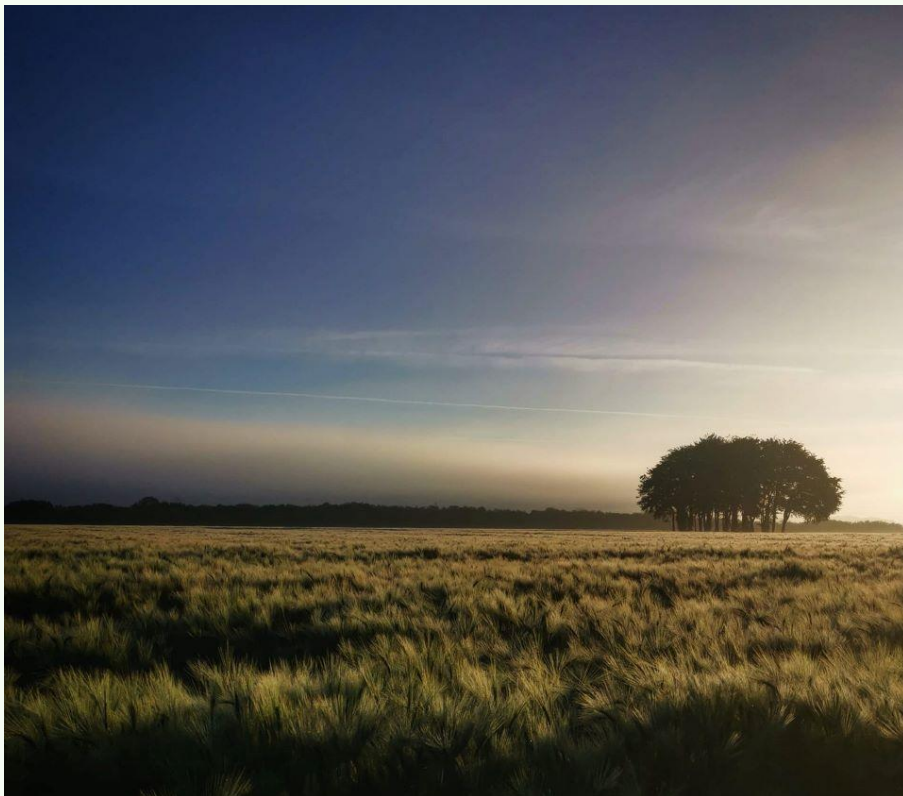
Southbourne Trees

The obvious ones to start with are the memorial trees north of the recreation ground, numerous photos have been taken.

The most iconic is the one below that was taken in April 2022 by Walter Francisco



The war in Ukraine started on 22nd February 2022



History of the Tree

Mr Fred Smith lived at No.308 next to the Coop. He was a WW1 veteran and one time 'winco' in the Royal Flying Corp.

In (probably) 1971/2 after Xmas, when his family came to visit, he planted the Christmas tree by his front gate.

Every time I pass by that location, I remember those days with great affection.

(I was a 'lodger' with Cardwell family at No. 310.) Dave Thompson



TPO - Individuals

Reference: 99/00917/TPO

Species: Cedar

Tree no: T1

status: Order Confirmed

Left:

I'm told this is Mr and Mrs Apps at a wedding at St. Johns.

No idea who's wedding but after 1951 as the WW2 memorial pillars are in place.

This is the only view I have of the houses before the Co-op was built in 1955. The Co-op moved in 2015.

In 2021 it became Pets Corner.

306 Main Road, PO10 8JN





We also buried a time capsule, which contained some coins, daily papers, information on Southbourne and things that we thought may be of interest in the future.



St John the Evangelist Church,
Main Road, Southbourne

Planting an Oak Tree for the Diamond Jubilee
on HM Queen Elizabeth's 86th birthday
21st April 2012

Stein Road Trees

Planted in November 2016
the result of one person's initiative..

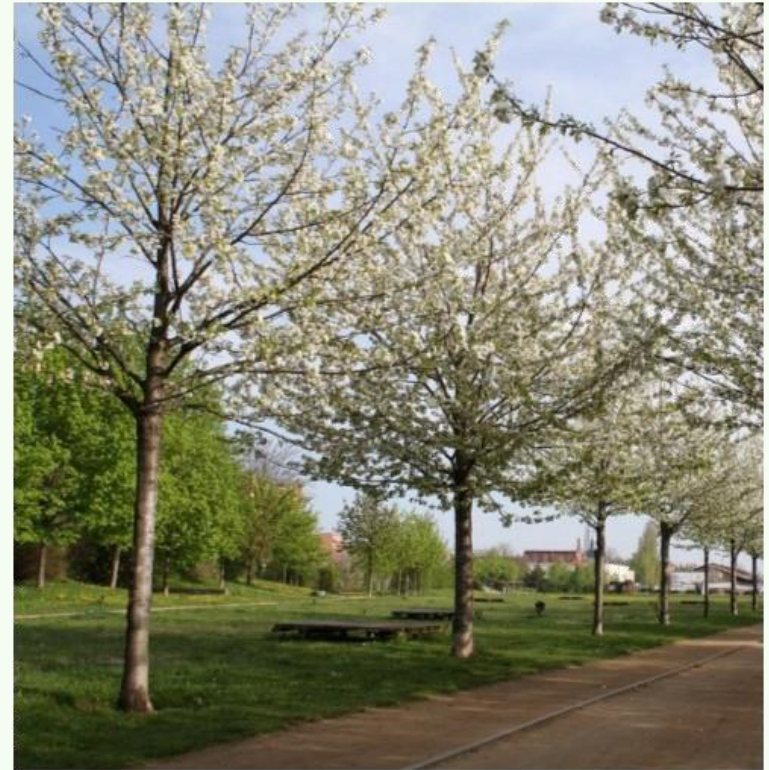
This picture of mature trees is how we
hope the 8 trees will one become,

Prunus avium Plena the spectacular double flowered variety of our native wild cherry which has been in cultivation for over 200 years.

It is a medium sized, deciduous tree which can reach up to 15m in height and grows with an conical open shape and an even, symmetrical crown. Ideally it is planted as a park or woodland tree but it can also be used in urban environments given the right conditions.

In Spring, the magnificence of this tree shows when it is laden with the brilliant double white flowers, hanging in pendulous clusters from the branches.

The leaves emerge with a bronze tinge to them, becoming mid green and elliptical as they mature. In Autumn they turn vibrant shades of reds, oranges and yellows. Plena is a sterile variety and so has no fruit unlike.



Cont'd...

Stein Road Trees

An application was made to the Southern Co-operative by Elizabeth, a resident, with the support of Southbourne Community Group which had a bank account and so could accept funding.

Southern Co-op kindly granted £1000 for the project to go ahead, and this donation was then generously supplemented by West Sussex County Council. WSCC selected the trees and provided the expertise to plant them.

They were planted on 22nd November 2016. This was entirely the initiative of one resident who with the support of our Southbourne Community Group was able to get eight trees planted at the Northern entrance to the village.



From one resident's determination
to an avenue of
Flowering Cherry Trees



Picture right is a
mature tree
courtesy of RHS.

Far right the
Stein Road trees
on 24th April 2018



In 2015, WSCC offered to supply and plant trees.

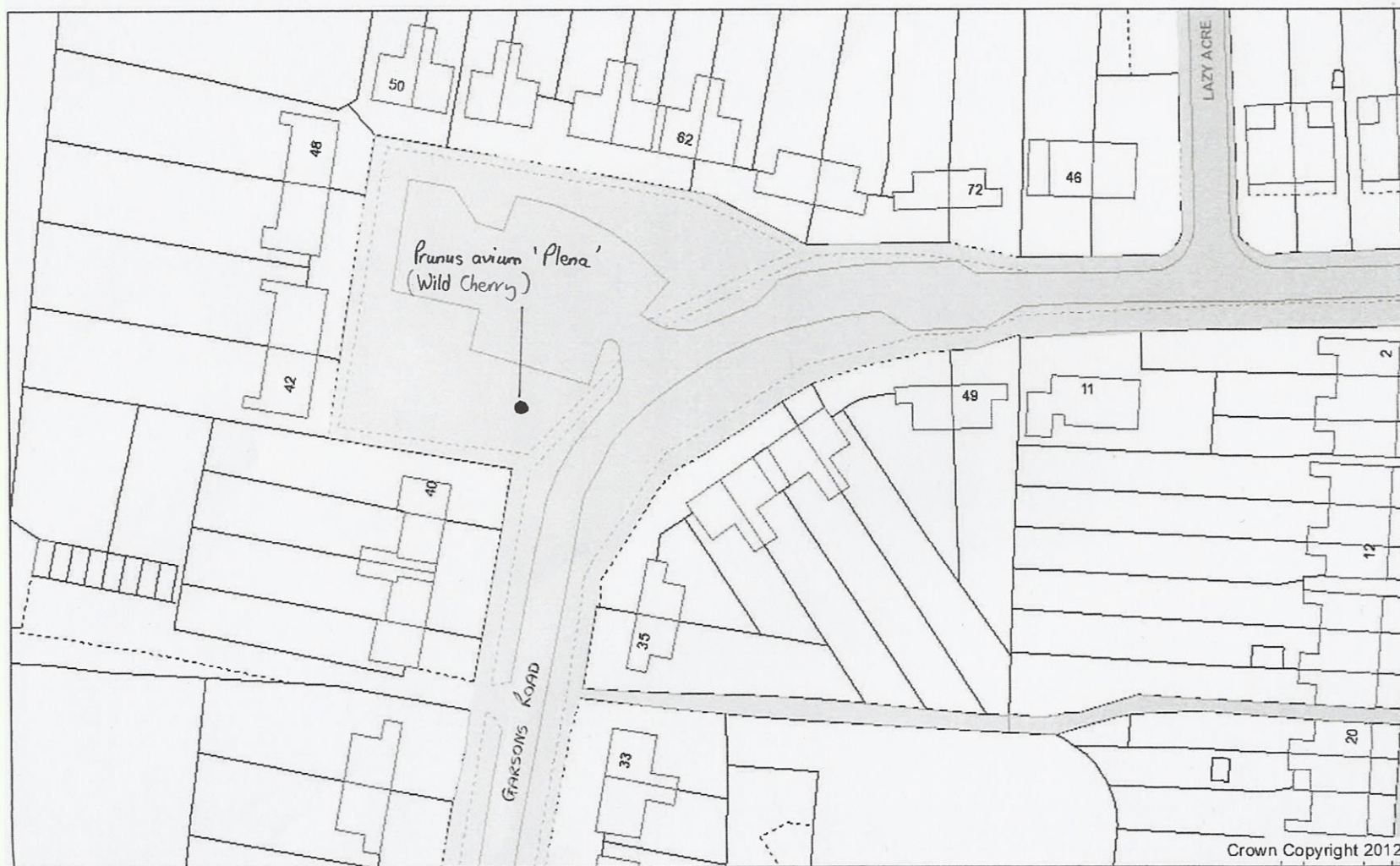
Residents were asked to suggest locations with promises to water them until they were established.

WSCC then selected suitable trees for the location and planted them.

I of course, kept the location maps and these are shown on the following pages.
(I have recently sent the maps to the Parish Council Environment Group)

The maps show the location and the type of tree planted.

May I thank all the residents that watered these for some time.



Crown Copyright 2012

Date: 25.08.15
Author: MW
Scale: 1:705
Map Notes:

This is the same type of tree as at the top
of Stein Road

Crown Copyright. All rights reserved.
West Sussex County Council
100023447 (2012)



Crown Copyright 2012

Date:

Author:

Scale 1:1,611

Map Notes:

Pyrus calleryana Redspire
(Ornamental Pear)

Betula pendula
(Silver Birch)

Crown Copyright. All rights reserved.
West Sussex County Council
100023447 (2012)



Crown Copyright 2012

Date:

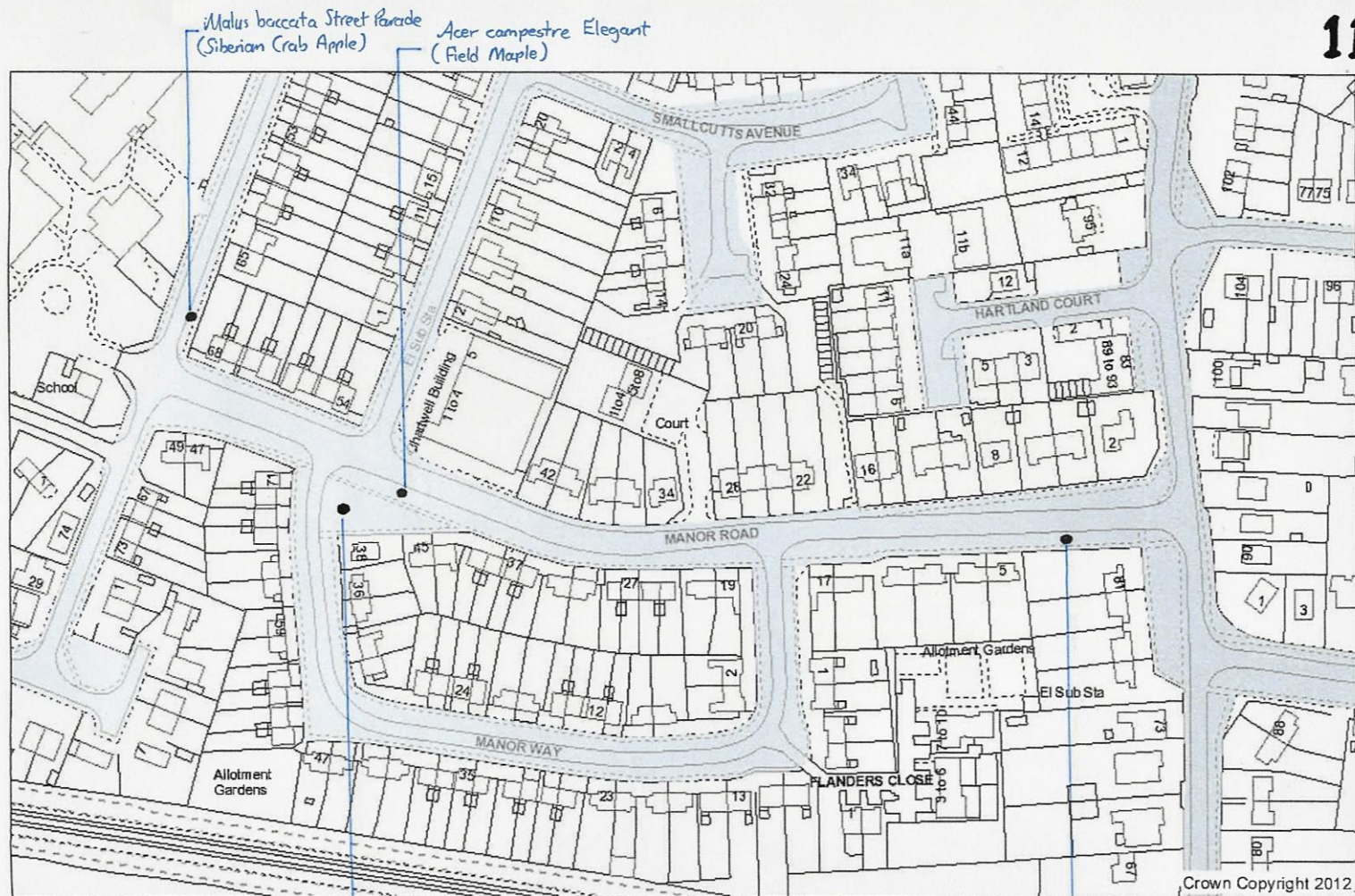
Author:

Scale 1:705

Map Notes:

2x *Sorbus aria Magnifica*
(Whitebeam)

Crown Copyright. All rights reserved.
West Sussex County Council
100023447 (2012)



Date:
Author:
Scale 1:1,611
Map Notes:



These were the trees on the corner of Garsons Road/Main Road.

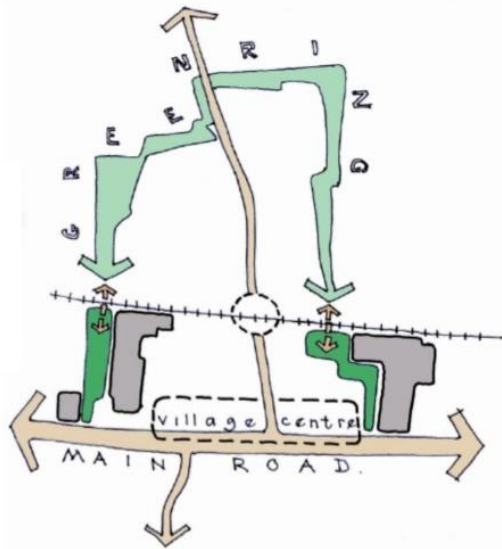
They were removed in October 2020 presumably by the landowner.



This tree on Main Road is a significant landmark as it is in very old photos of the road.

It does not have a Tree Protection Order. A bit concerning but it's probably not in any danger unless they want to widen the road and then they would get permission to remove it whether TPO was in place or not.





I'm sure all the members of the **Neighbourhood Plan** team would like to join me in thanking Bill Ferguson for putting together this COMA grant application in just 7 days. He has been on several Focus Groups during the compilation of the Southbourne Neighbourhood Plan, including the Environment group, and he was the only person that volunteered to try to complete this application by the closing date of 25th May.

It is really pleasing that his efforts have been successful and recognised, and that Southbourne village will benefit.

Ruth

This was the first step of the Green Ring which will take many years to complete, but you have to start somewhere.

We knew we would be given a significant amount of housing but with the green ring concept embedded in the Neighbourhood Plan we could ensure a green corridor would be included and available for all to enjoy.

The information about how it started may be of interest to future residents as those of us that started it will have long gone.

GreenRing Southbourne

The GreenRing Partnership

will need your help to develop a footpath with various features around the north of the village.

A community facility with nature observation points, play areas, dog walking and dog free zones and disabled access areas which link up existing footpaths and create new ones.

Do you walk our footpaths regularly?
Are you interested in improving them?
Do you have ideas for what could be included?
Would you be able to help?

GreenRing Partnership

A Community Project to make a green corridor, not just a footpath, around the north of Southbourne

contact: williamnmferguson@gmail.com

Southbourne Parish Council is the well deserving Council of the Week for amongst other things being the first parish council in England to be accepted onto the Locality/Department of Communities and Local Government **Community Ownership and Management of Assets (COMA)** programme in 2015/16.

Southbourne is the most westerly of the parishes in West Sussex, comprised of three settlement areas on the shores of Chichester Harbour, in the shadow of the South Downs. The best estimates are that the population of Southbourne is greater than 6,500. Southbourne is located on the A259 about midway between Portsmouth and Chichester, in Sussex. The parish council's precept for 2015/16 is £102,018. Southbourne Parish Council is by national standards a smaller parish council with big ambitions for its area.



The parish council is leading the Southbourne Partnership Area in Sussex as part of the Community Ownership and Management of Assets (COMA). The programme is designed to attract Partnership Areas comprised of local government and other public sector agencies wanting to establish a road-map for future complex or multiple asset transfers in the Partnership Areas.

A significant aim of the Southbourne COMA application is to commence the work to establish the green ring, which is a biodiverse community amenity space and to provide new safe walkways for residents avoiding two recognised dangerous footpaths both crossing a level crossing and one being close to a school.

The green ring will also act as mitigation against the inevitable potential for human disturbance to the protected habitats of the nearby Chichester Harbour Conservation Area caused by the construction of 300 new homes in the village. Further to a recent NALC recommendation to approve the application, the Locality grant panel was delighted to approve the parish council application to the COMA programme, thereby making Southbourne one of the few parish council-led areas so far to be accepted onto COMA. Other parished areas have followed suit and are now applying to the programme.

Though there have been no completed asset transfers yet by the parish council, the council is playing a leading role in attempting to move forward with the asset transfer process with a (COMA) pre-feasibility grant, triggered as a result of a Neighbourhood Plan. The council has also played a leading role in developing and delivering a Neighbourhood Plan for Southbourne (submission documents are available on www.southbourneparishcouncil.com.)

Work the council has spear-headed and is otherwise facilitating as a result of its **Neighbourhood Plan** include the following: monitoring and managing wildlife; developing the green ring; surveying community buildings; and improving provision for cyclists.

The council deserves to be commended by Surrey and Sussex Associations of Local Council to be Council of the Week as it is an extremely active council for one of its size and its acceptance onto the COMA programme (largely aimed at principal authorities) is a huge boon to both the parish sector and its own residents.



With the concept of a **Green Ring** firmly embedded in our 2015 Neighbourhood Plan it was decided to apply for 400 free whips. These would need growing on for future use so a suitable nursery was created behind the Pavilion in the recreation ground. Fencing was installed and whips planted, but it didn't survive long.



Greenring
Southbourne

Friday 13th November 2015 proved a lucky day for Southbourne as 400 tiny trees were planted in our tree nursery as the first stage of the Green Ring.

The saplings, provided by the Woodland Trust, will be nurtured until sites around the village are available for planting. This is a very long term project for the village, but we have to start somewhere and this was it.

Thankyou

13 Volunteers (aged from 20 to ??) achieved more than hoped for on the first day and they can be truly proud of their achievements.

Our thanks to them for giving up their time and turning up on what looked like a rainy day, but as you can see the sun came out.

Our thanks to Sarah for the refreshments and Maggie at Tuppenny Barn for the flapjacks.



Residents and a group from the Men's Shed supervised by Bill, helped build the compound



Please sign up to help. There are various things that will need doing, not all manual of course, so please do contact either Bill or the Parish Council if you would like to be part of this team of Southbourne residents.

Contact: **Bill Ferguson** - williamnmferguson@gmail.com
or info@southbourneparishcouncil.com

When helpers arrived at 10am, Sarah our Wildlife Officer was preparing to supervise the planting. She said afterwards "it was the easiest task I've ever undertaken as the ground was perfect" It was so easy they'd completed planting all 400 before midday.

SCALE 1:10
FRONT VIEW OF ARCH
CHALK PIT FORGE



An Art Grant was used to commission the design and creation of a gateway.

Designs were submitted and Chalk Pit Forge was selected to create once approved. This was then installed in the corner of Parham Place.

It seems a bit odd as it doesn't lead anywhere, but it will. I have faith that we will have a green ring eventually.

We entrust the responsibility for the future of our community to our councillors.





Stein Road Oak Tree.

What do we know about this other than it has been there a long time?
If you have any information please let me know via the contacts, where you
can also send pictures.

This corner. together with the border outside Tesco has recently been tidied
up and improved by Southbourne Environment Group which can be
contacted via Southbourne Parish Council



The Monterey Cypress Trees on Prinsted Shore were felled in 2021





We end where we started at the Memorial Trees