

# Southbourne Community

# AGE

*Concern*

New Road, Southbourne PO10 8JX

Presentation created for the 40<sup>th</sup> Anniversary in June 2016

Built at the end of WW2 the AC building provided 3 additional classrooms to the old Victorian School on the corner of Stein Road.  
(The site now occupied by Southbourne Bowls and Social Club.)

A HORSIA building  
Hutting Operation for Raising of the School Leaving Age to 15 in 1945.

Classes were held here until the new school, which opened in May 1960, was extended in 1975.



The old Victorian school was on the corner of Stein Road and New Road



Age Concern 2011





1948 - There must be a few in this picture that still live here.  
You won't be surprised to know that, given his eventual horticultural career, the only child in wellies is Mark Everson, St. John's Church organist for many years and Parish Councillor for 10 years retiring in 2015.



The Primary School class taken in the 1950's

Lunch was in  
the Jeffery  
Hall, New  
Road, next to  
the School,  
which was on  
the corner.

The first three classes in the new Primary School next door is recorded on 10<sup>th</sup> May 1960.

This part then became the Infant School when the building was extended and the Junior School part was built in 1975. They have remained separate schools ever since, with separate Headteachers, staff and governing bodies.



Founded on 21<sup>st</sup> June 1976, the centre provides a social facility for the over 60's. It was registered as a charity on 28<sup>th</sup> September 1976

Regular weekly events are organised by a happy band of volunteers.

We have our own minibus with wheelchair access to accommodate all abilities.

Volunteers are essential for us to be able to operate.

If you can spare a few hours, please contact us.

# AGE

## Concern

### Southbourne

New Road  
Southbourne  
PO10 8JX

Join us for activities  
in a happy and  
social atmosphere

**Wednesday - Coffee from 10am**

**Snooker - 10am**

**Two course lunch for £4.00 - 12 noon**

**Variety of activities from 1pm**

**(Cards \* Quiz \* Raffle \* Bingo etc.,)**

**Thursday - Gentle Tai Chi - 2pm**

*The centre is organised and run entirely by volunteers  
We welcome people to help us on a Wednesday with  
coffee, lunch or afternoon tea.*

*We also need people willing to go on our rota to drive  
the minibus, no special license needed.*

*If you have a couple of hours to spare come and join our team.  
If you can help just once a month or every week  
please ring John 373730*

# Wednesday

Coffee from 10am

Home cooked 2 course lunch  
at 12:00 for £4.00 + £1 membership fee

Afternoon Tea

Lunch menus include:

roasts, shepherds pie, steak and kidney pie, chicken  
casserole all with a selection of vegetables.

Good Wholesome English food.





Jackie Bowles, Furzeley Ladies Golf Club (right)  
presenting a £120 cheque to  
Jenny Benson, Southbourne Age Concern  
2nd May 2012

We are grateful for donations as there is  
no membership fee.



Richard has learning  
disabilities and comes  
every week to help lay the  
tables, serve the lunches  
and clear away.  
Richard also helps in a  
Chichester charity shop  
and attends the Apuldram  
Centre.  
This was his birthday party  
Sept 2011



Playing Musical Bingo



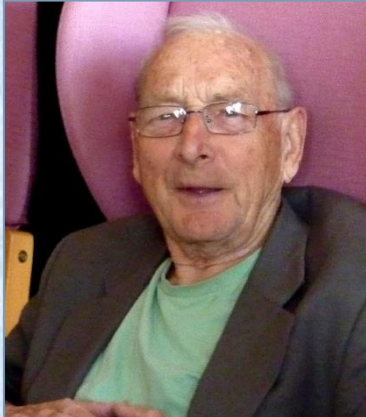
Sorry Jack, but  
we thought the  
hat looked better  
on Pauline



Our very own "Bisto Kids"



Some of our regulars







Ernie enjoying a win on the horses



On a visit to Manor Nursery we celebrated Phyllis's 90<sup>th</sup> the next Sunday.







One of our  
volunteer  
drivers



# AGE *Concern*

Jenny Benson  
our past  
chairman  
and  
John Southgate  
our secretary



Some of our  
volunteers





# Snooker

Snooker Wednesday from 10am



There is always a jigsaw puzzle on the go for those that enjoy them.



# Horseracing



Tony and Hazel Bleach provide everything necessary for an enjoyable afternoon at the races, except the Hats of course





Junior School visits during 2010





# Southbourne Junior School

As part of their studies they visited to ask us questions about our experiences during World War II





# Southbourne Junior School

The Junior School  
visited at  
Christmas and  
sang a selection  
of songs from  
their school  
concert.

Father Christmas  
came and we  
exchanged gifts.

The children then  
pulled a very  
large cracker.





# Bourne Community College



Pupils came complete with song sheets so that we could all join in the carols.

They had earlier visited local nursing homes so were in fine voice and we all enjoyed the start to our Christmas lunch.

Age Concern Christmas Lunch 14th December 2011

Pupils came from Bourne Community College to lead the carol singing. We then had a Turkey with Trimmings lunch.







Age Concern  
23rd May  
2012



Children from the Southbourne Junior School  
visited to see a display of memorabilia and to ask questions  
about memories of the coronation



They were treated to a  
celebration tea with  
a Union Jack cake







Southbourne  
Junior School  
making the  
longest  
paperchain  
for our  
Jubilee  
decorations





## Infant School visit to Age Concern 13<sup>th</sup> June 2012



First the children asked questions about what we remembered of the Coronation  
Mrs Boodle then showed how to make a doll out of wool.

The children then asked an adult to help them to tie the knots to make the body.  
We then put the arms through and trimmed the ends and we had made a woollen dolly in the same way they did in 1953



Age Concern Centre  
13th June 2012





# Infant School visit to Age Concern 13<sup>th</sup> June 2012



We then had tea and cakes and the children thanked the Age Concern.



13th June 2012  
at Age Concern





## Cream Tea June 2011



Age Concern  
Cream Tea  
June 2011





# Jubilee Lunch 6<sup>th</sup> June 2012





Our entertainment was provided by "Reflections", who caused much amusement with their performance.



Reflections

Entertaining  
Southbourne  
Age Concern



Diamond Jubilee  
Lunch  
6th June 2012







Southbourne Age Concern  
Jubilee lunch  
6th June 2012







Southbourne Age Concern  
Jubilee Lunch  
6th June 2012







A trip to Bognor for a  
Fish and Chips Lunch  
and then tea at  
Manor Nursery  
7th September 2012



Joan avoiding  
the paparazzi



Phyllis was given a card and plant  
as it was her 90th Birthday the  
following Sunday





**AGE**  
*Concern*



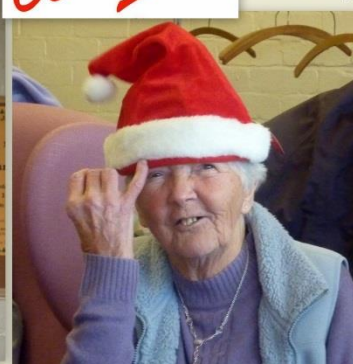




Pre Christmas Raffle  
When everyone got  
a prize  
5th December 2012

**AGE**  
*Concern*

The singing dancing hat caused amusement





# AGE *Concern*



Pupils from BCC led  
the Carol Singing  
before our  
Christmas Lunch on  
19th December 2012  
Over 50 regulars,  
helpers and guests  
enjoyed  
Roast Turkey and  
Trimmings.

Kit, one of our guests  
celebrated her  
92nd birthday







we played  
Oranges  
and Lemons



Pass the Parcel



The children sang  
Carols before having  
biscuits and squash.

There were thanks  
all round before the  
children had to be  
off as they were  
singing carols  
at a local  
nursing home.







Mr Luke Hanna  
Headteacher at  
Southbourne  
Junior School



The Junior School  
visit on  
12th December 2012

The children came  
to sing carols but first  
we played a few games  
that the Age Concern  
members remembered  
Hunt the thimble  
was first,  
then musical chairs





Originally started as a coffee shop, it evolved into a market in January 2012. Held on the last Friday in the month from January to June we had a variety of stalls with craft, bric-a-brac, plants and of course refreshments with homemade cakes.

We stop for the summer but resumed in October and November

## Mini Market

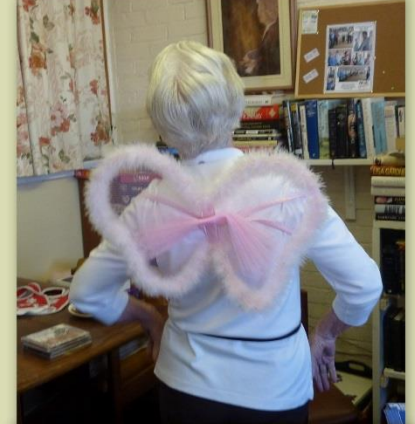


Some 15 stalls selling various goods, and both The Lions and Age Concern with Bric-a-Brac stalls.





**Betty found herself some fairy wings.  
We later found the wand, but the magic had worn out.**



Age Concern  
Mini Market  
30th March 2012







#### Race 1 Replacement Joints HANDICAP

- ❑ 1. POMPEY BLUE by Goalless out of Fratton Park
- ❑ 2. RED WARNING by Triangle out of Car Boot
- ❑ 3. GREEN THUMB by Gardeners Delight out of Bud Vase
- ❑ 4. GREY DAWN by Passing Shower out of Dark Cloud
- ❑ 5. BLACK MARK by Skidding out of Braking Too Hard
- ❑ 6. YELLOW JACKET by Elf and Safety out of Taking Precautions

#### Race 2 Volunteers Needed CHASE

- ❑ 1. BLUE MOON by Rare Event out of Star Gazer
- ❑ 2. RED PENCIL by Assessor out of Examination
- ❑ 3. GREEN SHAMROCK by Lucky Four out of Clover
- ❑ 4. GREY SHADES by Risque Novel out of Best Seller
- ❑ 5. BLACK MAGIC by The Lady Loves out of Milk Tray
- ❑ 6. YELLOW FLASH by Delivery Boy out of News Paper

#### Race 3 Benson Retirement TROPHY

- ❑ 1. BLUE HEAVEN by Sky at Night out of Astronomy
- ❑ 2. RED CLOUD by Volcano out of Iceland
- ❑ 3. GREEN FIELDS by Coming Up Daisies out of Lawnmower
- ❑ 4. GREY MATTER by Cerebral out of Thought Processor
- ❑ 5. BLACK OUT by ARP Warden out of Dad's Army
- ❑ 6. YELLOW RIBBON by The Old Oak Tree out of Welcome Home

#### Race 4 Friendship FURLONGS

- ❑ 1. BLUE FLUFFY SLIPPERS by Footrest out of Damart
- ❑ 2. RED LIGHT by Kerb Crawler out of Dodgy District
- ❑ 3. GREEN FLAG by Breakdown Rescue out of Diesel
- ❑ 4. GREY SATIN by Dangerous Liaison out of Sheer Fantasy
- ❑ 5. BLACK ADDER by Comedy out of Cunning Plan
- ❑ 6. YELLOW DAISY by Wants to be Different out of Bouquet

#### Race 5 Walking Stick STAKES

- ❑ 1. BLUE BOTTLE by Fly Swat out of Don't squash it on the Window
- ❑ 2. RED ARROW by Hawk out of Aero Acrobatics
- ❑ 3. GREEN FLY by Spray the Roses out of Sheer Desperation
- ❑ 4. GREY MARE by Stable Lad out of Photo Finish
- ❑ 5. BLACK LACE by Wicked Lady out of Highwayman
- ❑ 6. YELLOW RIVER by Christie out of 1970 Top of the Pops

#### Race 6 Age Concern Challenge CUP

- ❑ 1. BLUE RINSE by Reckits out of Vintage Wash Day
- ❑ 2. RED BULL by Formula One out of Grand Prix
- ❑ 3. GREEN BOTTLE by Accidental Fall out of Sitting on a Wall
- ❑ 4. GREY HOUND by Coach Journey out of Travel Plan
- ❑ 5. BLACK VELVET by Mine's a Half out of Guinness Bottle
- ❑ 6. YELLOW PERIL by Parking Ticket out of Jobsworth

### Southbourne AGE Concern



Age Concern Centre  
New Road

Friday September 21st @ 7:00pm

Admission £5 on the door, includes Supper

Our thanks to Tony and Hazel Bleach  
for providing the fun this evening.

Southbourne

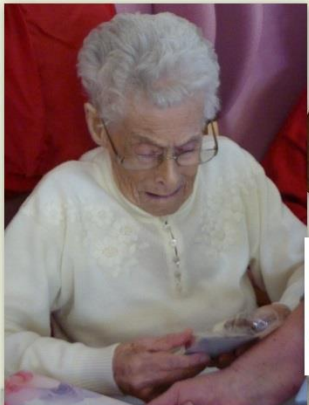
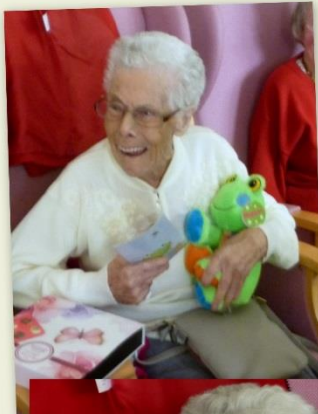
AGE  
Concern

A Horse Race Night with Sausage and Chips Supper, the idea of Roma, saw 43 enjoy an evening with Tony and Hazel Bleach as the race stewards. An enjoyable evening and one which will be repeated, no doubt.



Rob was disappointed not to win all the races again, on his lucky colour,





Wishing Connie a very  
Happy 100th Birthday

from all at  
Southbourne





Southbourne and District

**AGE**  
*Concern*

Founded June 1976



the Walking Stick Jive



A Gentle Hokey Cokey



Southbourne and District  
Age Concern  
celebrated their  
38th Anniversary



Flags  
at the  
front



The Conga







22nd June 2016





Robin Boodle  
90th Birthday  
at  
Southbourne Age Concern





John Southgate, our acting chairman and secretary, usually cooks our Christmas lunch. Everyone is invited to join us from all the Groups who use the centre.





7th December  
2016



Father Christmas cometh



7th December 2016  
Santa at Age Concern







**AGE**  
*Concern*

Carol Singing  
and  
Christmas Lunch  
14th December  
2016

Men's Shed





Southbourne Sea Scouts, friends from Age Concern and relatives gathered at the Prinsted Scout HQ to see Sandy Wells present the Arctic star to Robin Boodle, who served in the Arctic Convoy on HMS Suffolk in 1941

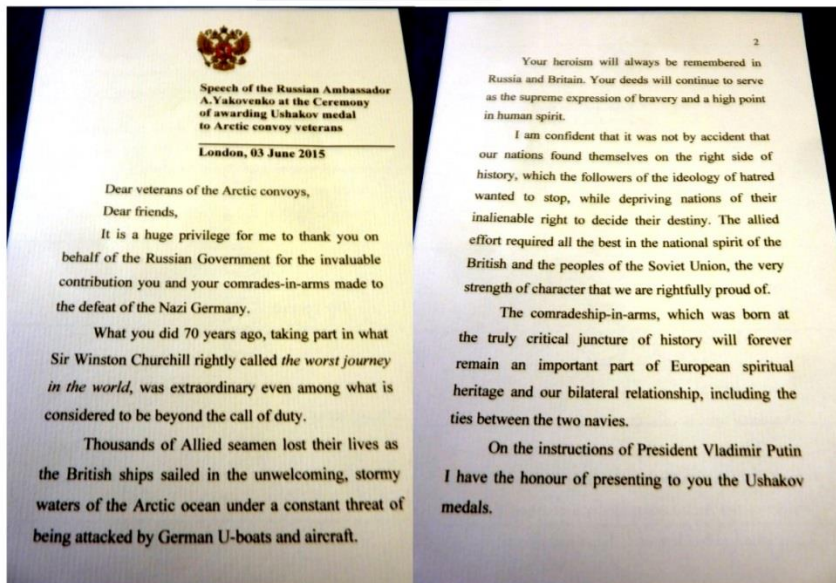
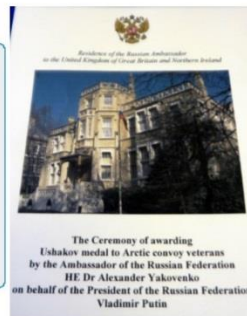


## Russian Recognition

Having received the British Arctic Star in 2013, delivered by the postman, it was something of a surprise to be invited to the Russian Embassy in Kensington Palace Gardens in June 2015, to receive two Russian WW2 honours.

Robin Boodle came to share his story with his old friends at the Southbourne Age Concern Wednesday lunch, and told us he was presented with the Russian 70th Anniversary Victory Medal and the Ushakov Medal, named after an Admiral that never lost in battle and was proclaimed patron saint of the Russian Navy. Robin said he had a fantastic day and was treated like royalty, even the taxi driver wouldn't take the fare when he knew where he was going and why.

Robin, who celebrated his 90th birthday in 2014, served on HMS Suffolk in 1941 and did three trips to Russia when he was 16 to 17 years old.



Having received his Arctic Star in 2014, in June 2015 Robin went to the Russian Embassy, in Kensington Palace Gardens to be presented with two Russian medals.





Tai Chi – Thursday 2 – 3pm

Tai Chi is popular and we have a group of regulars who come every Thursday at 2pm.



# Southbourne Men's Shed

*Is a facility for use by men who wish to socialise with others.*

*The cost for a subscription for one year is just £5.00.*

*The contribution per visit is just £1.00 with a maximum cost of £2.00 per week including cups of tea or coffee*

*The shed has regular opening times but additionally, paid up members will have access at any time.*

---

**You have seen Men's Sheds on the TV.**

**You have read about our shed in the  
CHICHESTER OBSERVER and  
VILLAGE Magazine.**

**If you want to know more, look up  
[menssheds.org.uk](http://menssheds.org.uk) on the internet or  
just come in and meet us.**







Southbourne



### Men's Shed build a SHED

The Men's Shed  
needed to expand  
and Age Concern  
needed a new shop  
so a beneficial  
arrangement was  
made that  
Age Concern  
would provide  
materials and  
the Men's Shed  
would build our  
New Shop

### AGE Concern open a new Charity Shop



Sandra James our  
County Councillor  
came to open the shop  
on 2nd December 2015



Judy  
our shop  
Manager

Shop  
Open  
Wed  
10 - 12







Our Charity Shop was in need  
an upgrade and the Men's  
Shed needed to expand  
so the men built us a shed  
to use as our shop.  
It was opened on 2nd December  
by Sandra James our  
County Councillor.







Books for Children



Sweet Things



Trefoil Guild



www.beatscharity.co.uk



The Old Stogies  
Ukulele Showband



Southbourne Sea Scouts

Over 110 people helped with this event and there were obviously a lot more involved in preparing things for the 28 stallholders. A very pleasant afternoon spent with 100's of locals, who came and supported us.



www.releaseinternational.org

Thank you

## Southbourne Sussex Day Fete

In the garden  
Hedge 4 West

**Saturday 13th June**  
**St John's Church Garden**  
**1.30pm to 4.30pm**  
**Fun and Games for all**

Musical entertainment  
throughout the afternoon

Old Fogies Ukulele Band

**32 stalls**

Various stalls being run by local groups

Cakes and bakes

Toys & face painting  
Books and Bric a Brac  
Cards & Jewellery  
Games

Plants  
Tombola

Get things in 15 mins for the art  
and other goods

Southbourne Community Fete

Southbourne Community Fete



Southbourne WI Cake Stall





Southbourne Lions



Dragon Ladies



St Wilfrid's Supporter Group



AFC Southbourne



Men's Shed



Free Church



Usborne Books



Sussex Day Fete  
13th June 2015



Tuppenny Barn



Family Support Group

Family Support Group



Founded by Mary Marrs, who was both a Parish and District Councillor Southbourne Age Concern have provided a friendly centre for residents to meet since 1976.

Some of our regulars were born in the parish or nearby and even went to school here so they appreciate this link with their local history.

We are pleased to fulfil a service to the Community of Southbourne and have helped or benefited from friends in the Infant and Junior Schools, Sea Scouts, St. John's Church, The PTA, Bourne College, Southbourne Guides and recently The Men's Shed. The Southbourne Parish Neighbourhood Plan had many meetings here during the three years preparation and following on from that the Green Ring Group and the Environment Group hold meetings at the centre.

The centre continues to be run entirely by volunteers, who manage the centre, cook the lunches and drive the bus.



## Southbourne History

St John the Evangelist Church, Main Road, Southbourne PO10 8LB

Consecrated on 18<sup>th</sup> May 1876

The Parish of Southbourne was formed when St John's first Vicar, Reverend Holloway was inducted in 1878 but remained part of the Parish of Westbourne.





## Southbourne Parish

- ☒ Age Concern - Men's Shed
- ☒ Bourne Community College
- ☐ Bourne Leisure Centre
- ☐ Library
- ☐ New Life Church
- ☐ Sea Scouts
- ☐ Southbourne Bowls and Social Club
- ☐ -Southbourne-
- ☐ -Infant & Primary Schools
- ☐ Southbourne Surgery



SOUTHBORNE FREE CHURCH



# The End

of the first 40 years